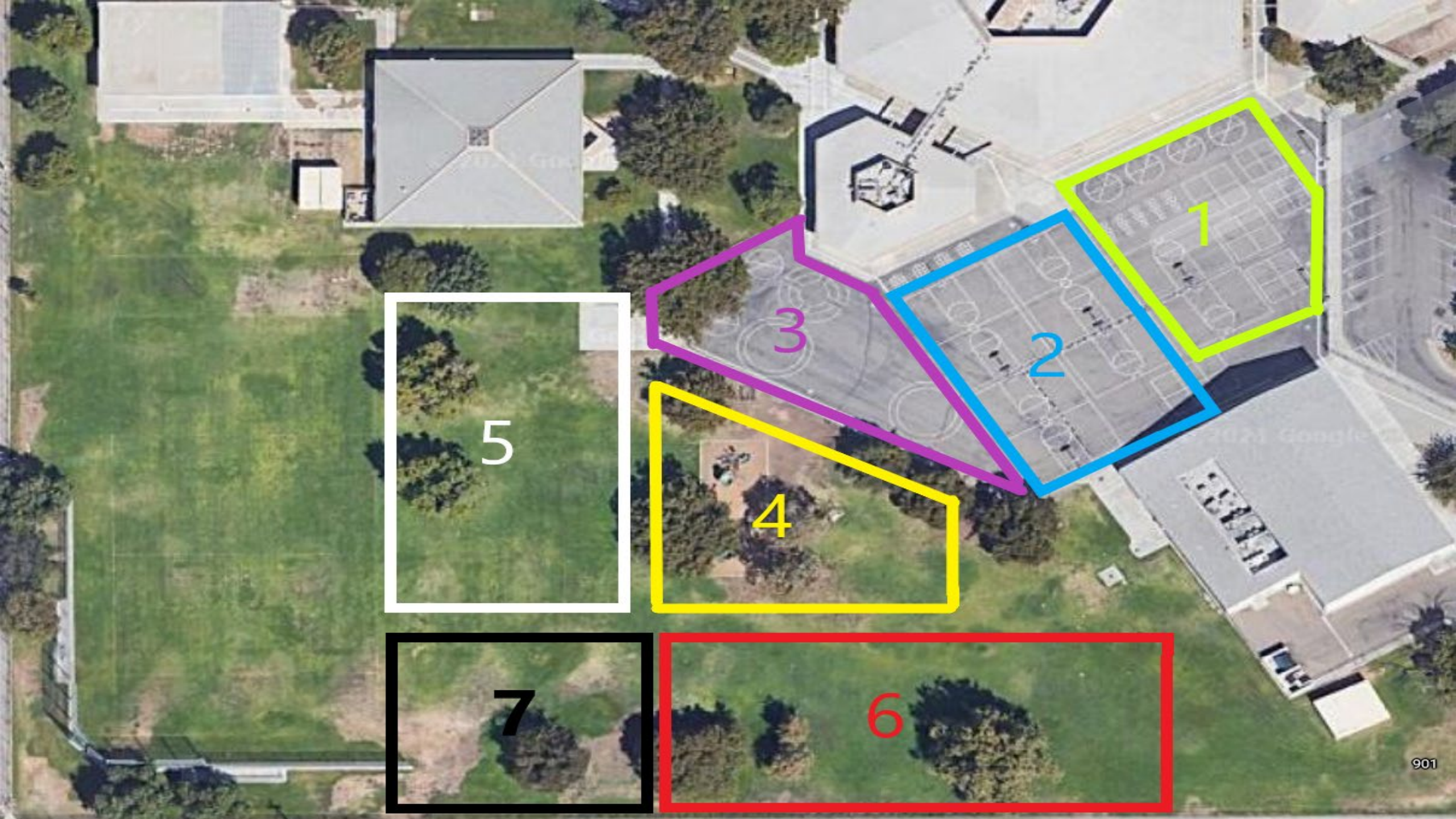




# Muir Elementary

By Coach Nick







# Muir Yard Zones

- Green Zone - Basketball, Four Square
- Blue Zone – Basketball
- Purple Zone – Equipment/Play Area
- Yellow Zone – Play Structures
- White Zone – Kickball, Volleyball
- Red Zone – Football, Kickball
- Black Zone – Kickball, Football

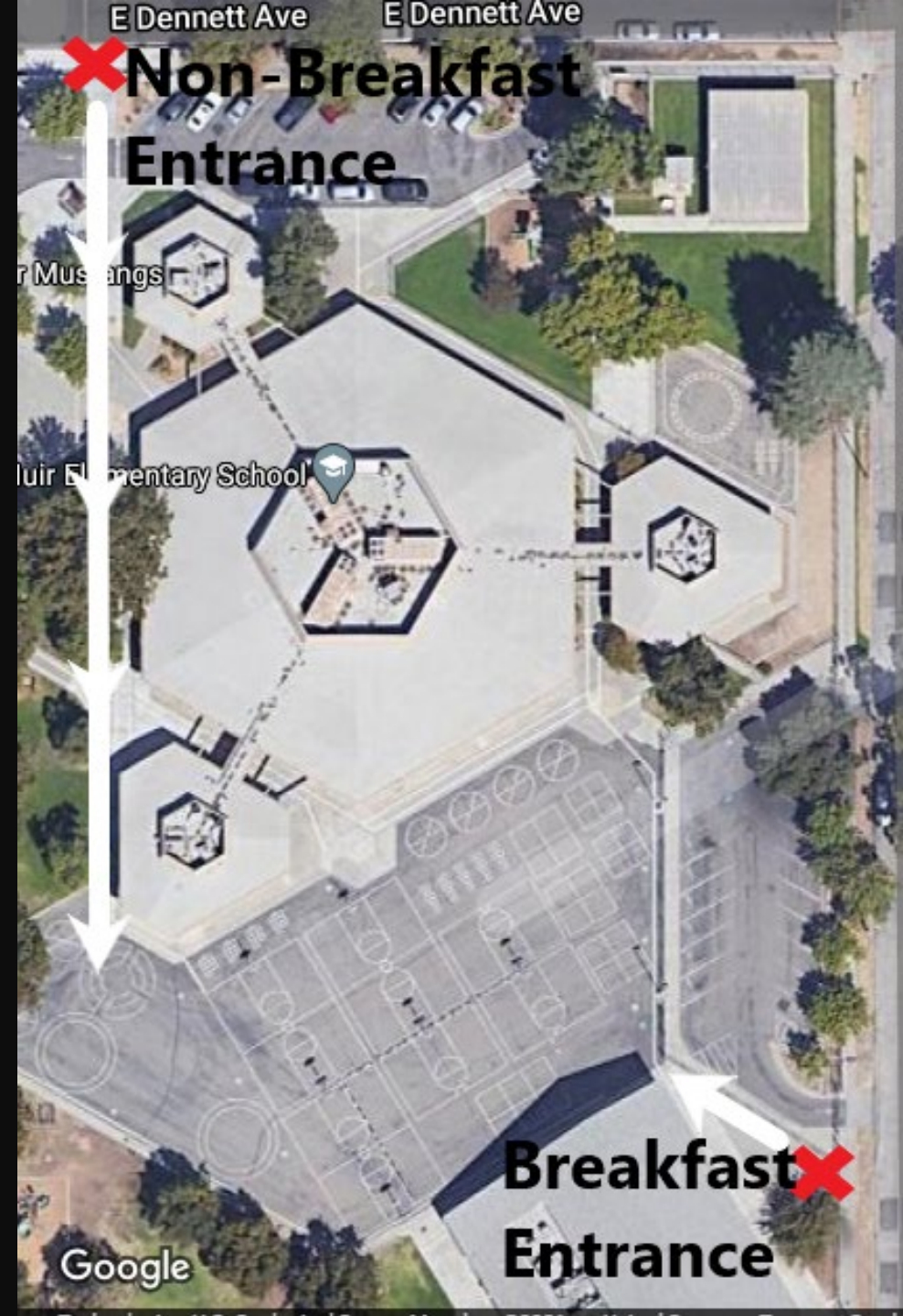




# Arrival Entrance

---

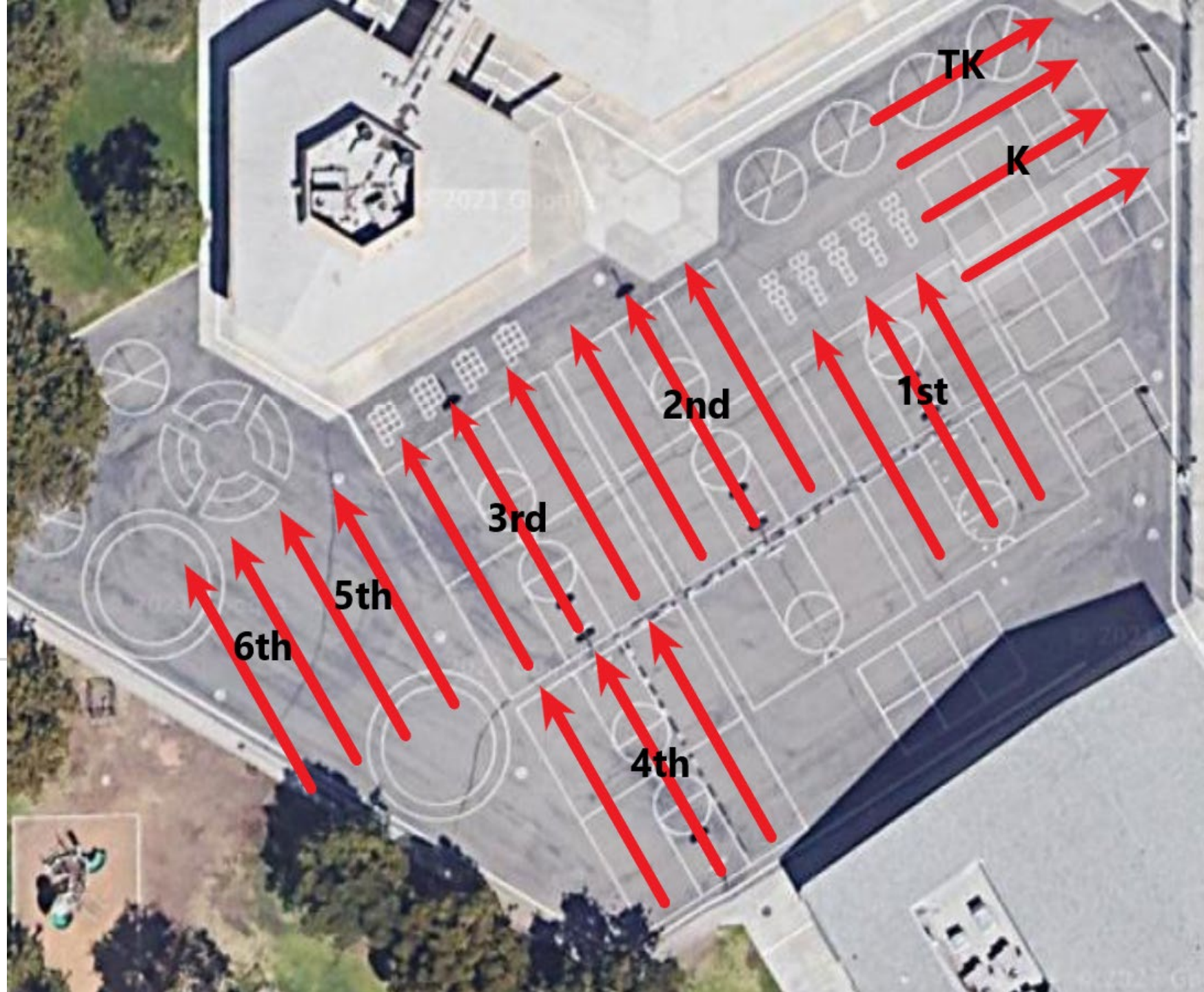
- Students not eating breakfast will arrive on entrance located off Dennett Ave
  - All kinder students should be dropped off at the cafeteria in the morning. Students will be walked to their class.
  - Students eating breakfast will arrive on entrance located off Wilson Ave.
- 





# Morning Dismissal

Lines fill in from both sides with breakfast students and non breakfast students.



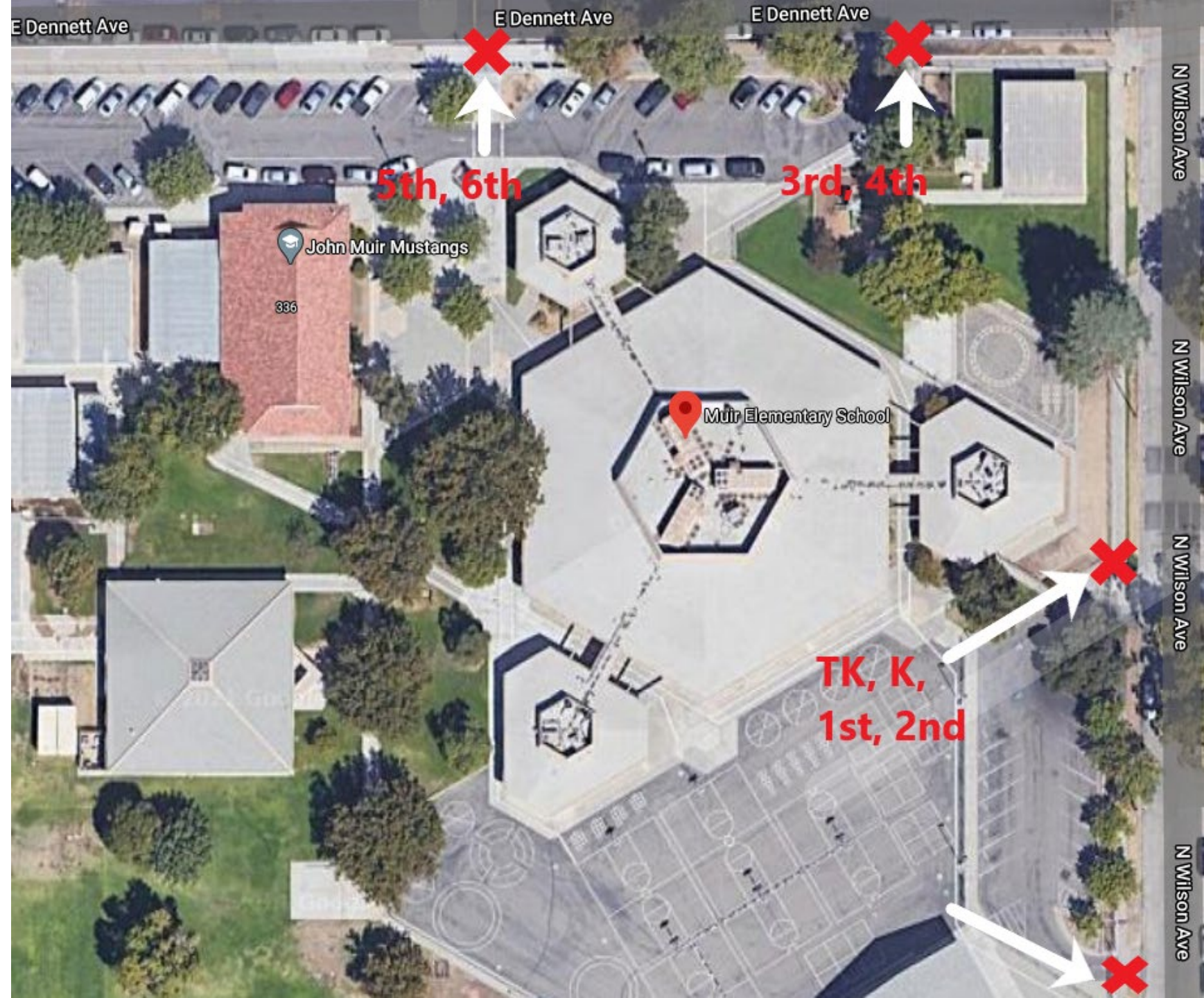






# Dismissal Gates

- TK and Kindergarten dismissal gate located on Wilson Ave.
- 1<sup>st</sup> and 2<sup>nd</sup> Grade dismissal gate located on Wilson Ave.
- 3<sup>rd</sup> and 4<sup>th</sup> Grade dismissal gate located on Dennett Ave, on northeast side of school.
- 5<sup>th</sup> and 6<sup>th</sup> Grade dismissal gate located on Dennett Ave, on north side of school in front of the office.







E Dennett Ave

E Dennett Ave

E Dennett Ave

N Wilson Ave

N Wilson Ave

N Wilson Ave

N Wilson Ave

5th, 6th

3rd, 4th

John Muir Mustangs

336

Muir Elementary School

TK, K,  
1st, 2nd



# TK and Kindergarten Dismissal Lines

---

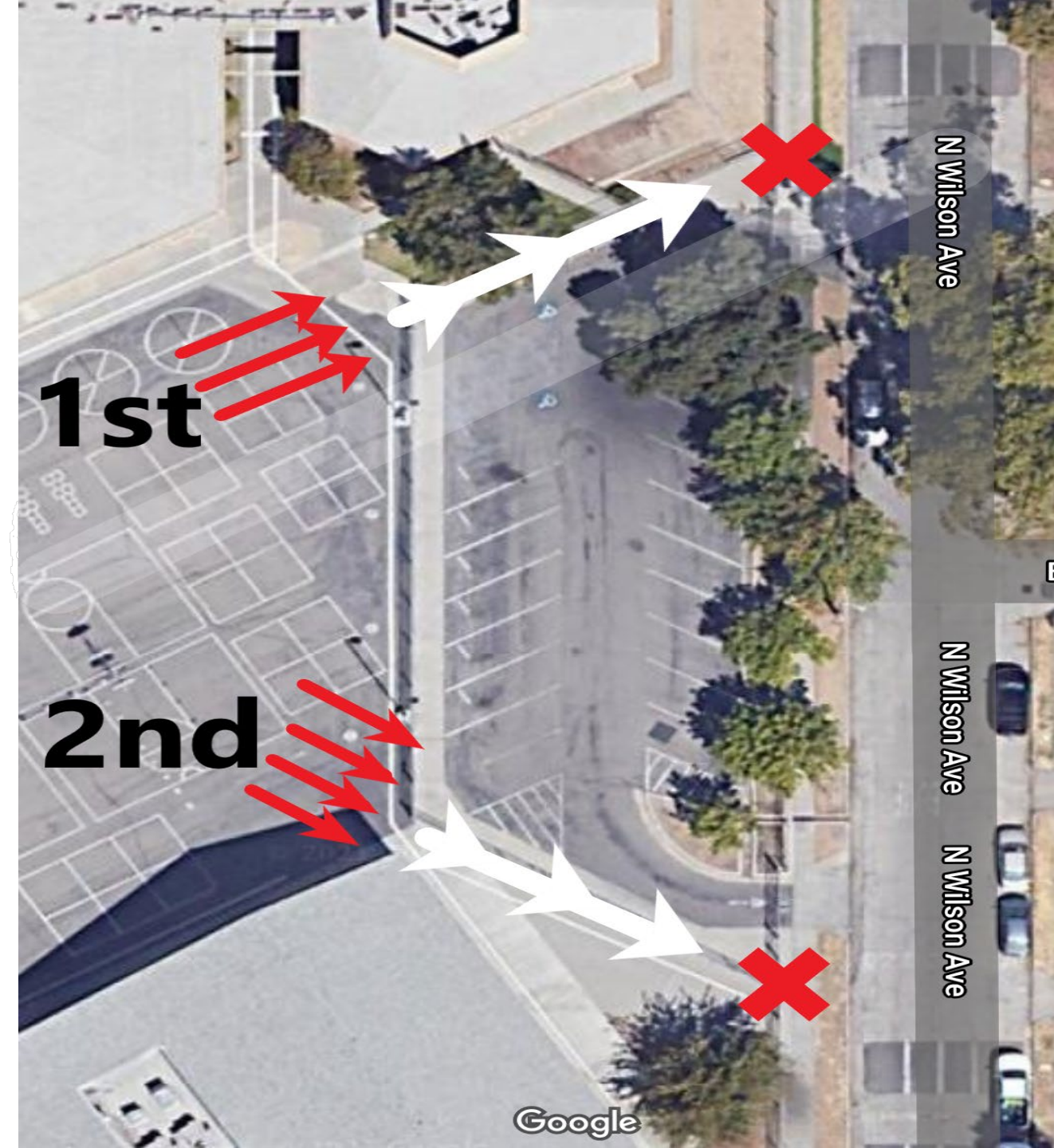
- Students will line up with teachers and following social distancing protocols.





# 1<sup>st</sup> and 2<sup>nd</sup> Grade Dismissal Lines

- Students will line up with teachers and dismiss one class at a time, following social distancing protocols.
- Note: If student is awaiting pick up from an older sibling, student must wait at dismissal gate for older sibling to arrive.
- (First days- 1<sup>st</sup> and 2<sup>nd</sup> will be together at the 2<sup>nd</sup> grade gate)





# 3<sup>rd</sup> and 4<sup>th</sup> Grade Dismissal Lines

Students will line up with teachers and dismiss one class at a time, following social distancing protocols.

Note: If student needs to pick up a younger sibling in a lower grade level, student must leave campus and walk to sibling's dismissal gate.

If student is awaiting pick up from an older sibling, student must wait at dismissal gate for older sibling to arrive.





# 5<sup>th</sup> and 6<sup>th</sup> Grade Dismissal Lines

Students will line up with teachers and dismiss one class at a time, following social distancing protocols.

Note: If student needs to pick up a younger sibling in a lower grade level, student must leave campus and walk to sibling's dismissal gate.

